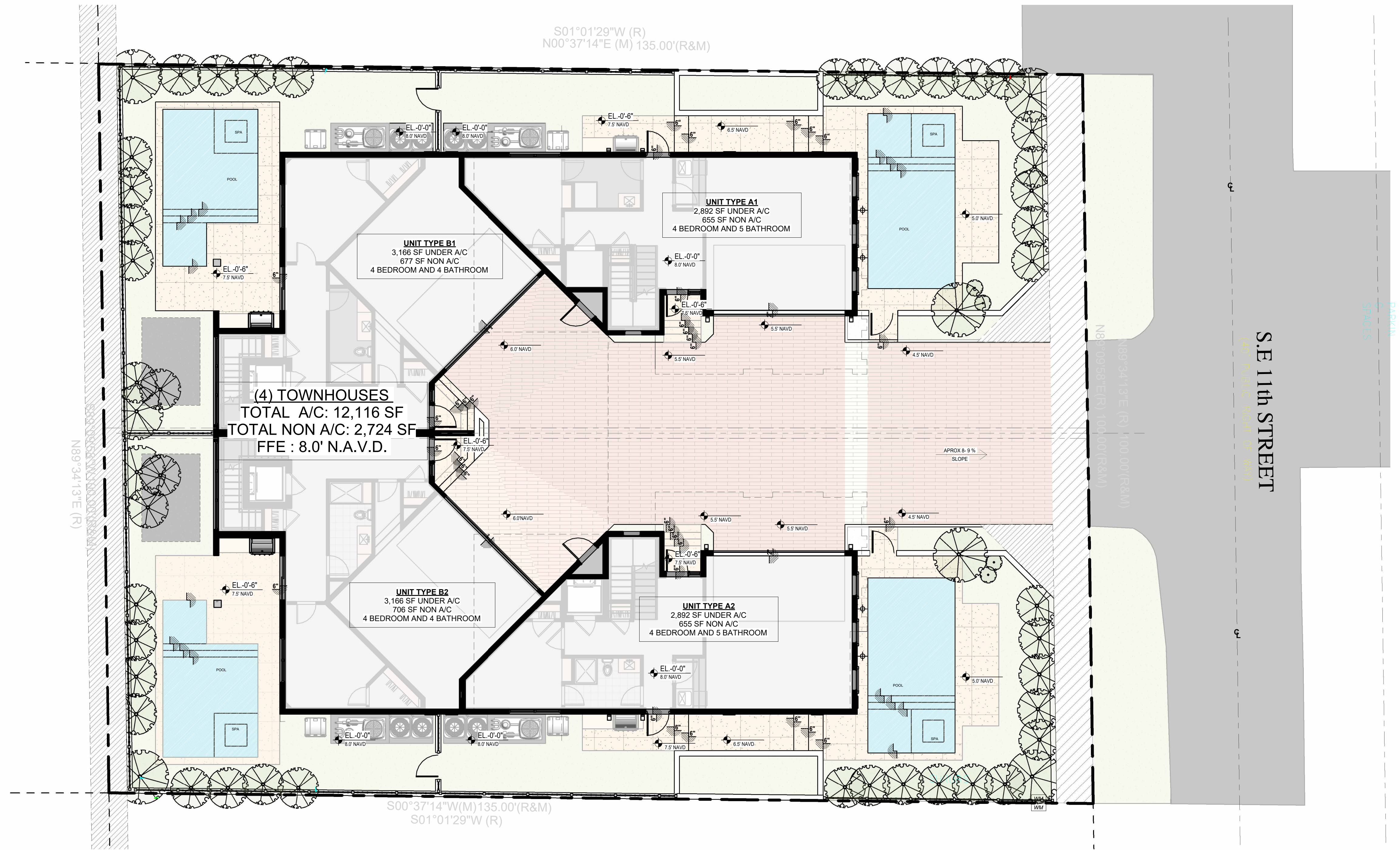


[illegible]

## SITE LEGEND

Existing Elevation  
Step


 EL. 0'-0"
 Proposed Finish Floor  
Elevation - FFE



1  
G-4

**SITE PLAN.**  
1/8" = 1'-0"



PUMPANO BEACH  
TOWNHOMES

3214 SE 11TH STREET  
POMPANO BEACH, FL 33062



**STOFF**  
ARCHITECTURAL GROUP

PROJECT #

L-0011105 FIRM-AA003379

IDEAS, DESIGNS, ARRANGEMENTS, & PLANS INDICATED OR REPRESENTED BY THIS DRAWING ARE OWNED BY & THE PROPERTY OF THIS OFFICE, & WERE CREATED, EVOLVED, & DEVELOPED FOR USE ON, & IN CONNECTION WITH THE SPECIFIED PROJECT. NONE OF SUCH IDEAS, DESIGNS, ARRANGEMENTS, OR PLANS SHALL BE REPRODUCED, COPIED, OR OTHERWISE USED BY ANY OTHER PERSON OR FIRM, OR FOR ANY OTHER PURPOSE, WITHOUT THE WRITTEN PERMISSION OF RANDALL E. STOFFT ARCHITECTS, WRITTEN DIMENSIONS ON THESE DRAWINGS SHALL HAVE PRECEDENCE OVER SCALE DIMENSIONS. CONTRACTORS SHALL BE RESPONSIBLE FOR OBTAINING ALL NECESSARY PERMITS FOR THE JOB. & THIS OFFICE MUST BE NOTIFIED OF ANY VARIATIONS FROM THE DIMENSIONS AND CONDITIONS SHOWN BY USE DRAWINGS. SHOP DETAILS OF ADEQUATE SCALE MUST BE SUBMITTED TO THIS OFFICE FOR APPROVAL, BEFORE PROCEEDING WITH FABRICATING OR CONSTRUCTION. ALL RIGHTS RESERVED RANDALL STOFFT ARCHITECTS P.A.

**G-4**